

Mississippi Forestry Commission

Protection – Management – Information

2013

Annual Report



The mission of the Mississippi Forestry Commission is to provide active leadership in forest protection, forest management, forest inventory and effective forest information distribution necessary for Mississippi's sustainable forest-based economy.



Message From the State Forester	1
Introduction & District Map	2
MFC's Organizational Chart	3
MS Institute for Forestry Inventory/Management	4
Private Lands	4
Forest Legacy	5
Forest Resource Development	5
Forest Stewardship Program	5
Public Lands	6
Sixteenth Section Lands	6
Forest Health	7
Fire Services	8
Communications	8
Aviation	9
Rural Fire Assistance	9
Volunteer Fire Assistance Program	9
Fire Law Enforcement	10
Information & Public Outreach	11
Underserved Outreach Program	11
Urban & Community Forestry Program	12
Champion Tree Program	13
Business Support	14
Financial Services	14
Information Systems	14
Human Resources	14
Safety & Training	14
Revenue Report	15
Expense Report	15
Board of Commissioners	16

The Mississippi Forestry Commission provides equal employment opportunity and services to all individuals regardless of disability, race, age, religion, color, gender, creed, national origin or political affiliation.

This institution is an equal opportunity provider.

2013 – Annual Report



The Mississippi Forestry Commission has been a leader in the protection, management and sustainability of our state's forests for over 85 years. Year after year we provide expertise, information and support to keep Mississippi's 19.8 million acres of forestland healthy, productive and profitable.

We are proud of our service to the public and our protection of the state's valuable forest resource. Committed to delivering quality services and assistance to both rural and urban landowners, the Forestry Commission looks forward to the continued privilege of caring for Mississippi's trees, forests and natural resources.

We appreciate our partners who provide support, collaboration and implementation of many of our programs and services. We work hard to maintain and develop our relationships with natural resource agencies, organizations and individuals. These relationships ensure the citizens of Mississippi receive the best assistance and service possible.

I would also like to thank our state leaders, commission, staff, partners and citizens for their continued support and assistance in making 2013 a success.

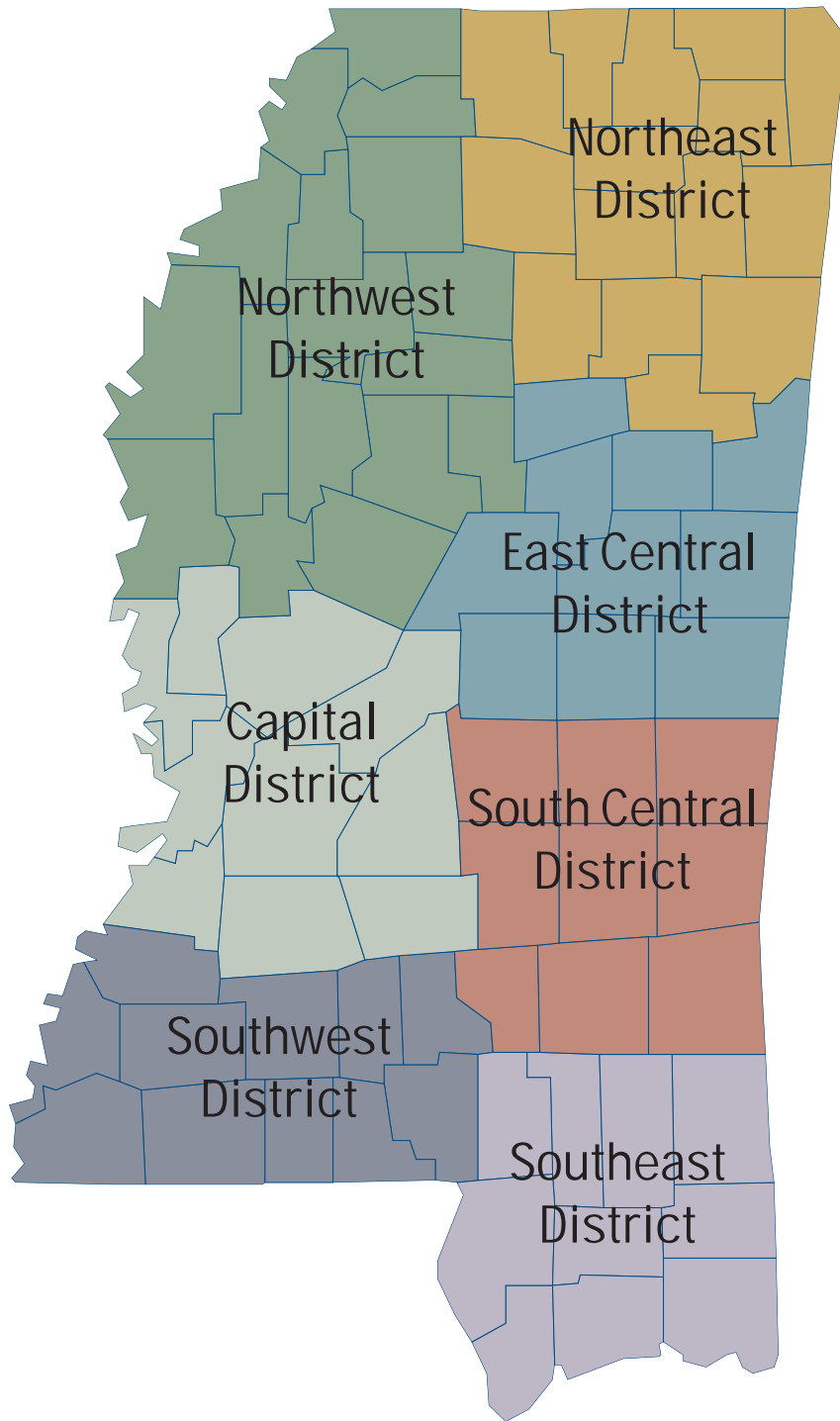
Please contact our office at any time. We look forward to serving you.

A handwritten signature in blue ink that reads "Charlie Morgan". The signature is fluid and cursive.

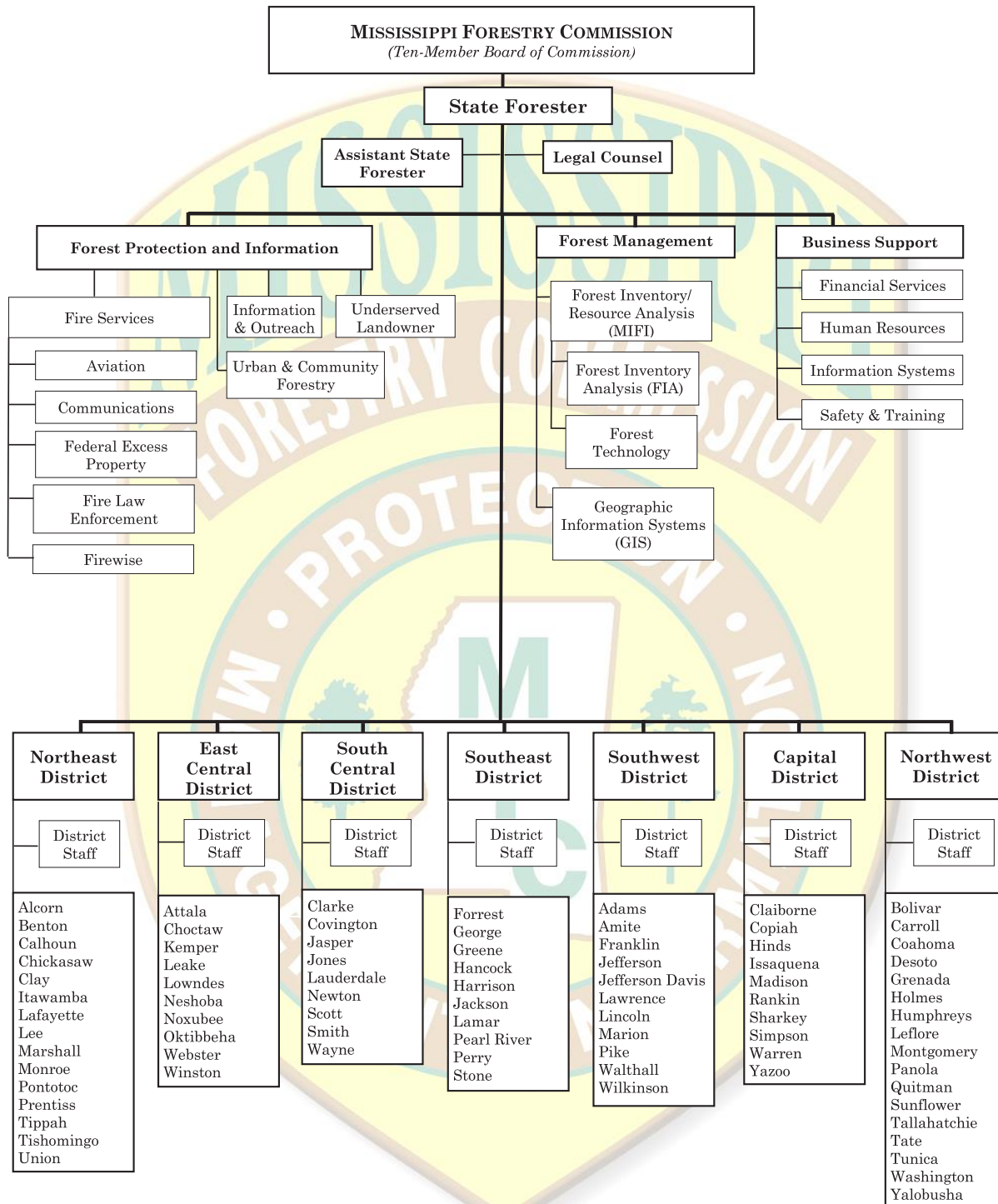
Charlie Morgan
State Forester

Mississippi Forestry Commission Administrative Districts

District Map



Mississippi Forestry Commission Administrative Districts



MS Institute for Forest Inventory/Management

The Mississippi Institute for Forest Inventory/Forest Management provides direction and support to several program areas carried out on private and public lands.

MFC's Resource Analysis program oversees the development, implementation and management of the agency's geographic information system. This is a statewide system that is utilized for information on fires, public/private lands and urban/community forestry programs.

In 2006, the Mississippi Legislature passed a law that brought the Mississippi Institute of Forest Inventory (MIFI) under the oversight of the MFC. Both MIFI and MFC's Forest Management Division dealt with forest inventory. By consolidating these activities, the agency eliminated duplication of work in particular areas and also allowed each department to capitalize on the other's strengths to form a stronger organization. MIFI is now a program area of the MFC and the MIFI inventory is performed by MFC personnel.

In an effort to promote economic development of the state's forest resources, MIFI, in conjunction with the Mississippi Development Authority (MDA), provides forest resource information and maps for economic development. A statewide assessment of forest resources is maintained utilizing satellite imagery to estimate forest removals, regeneration and developmental stages of forest cover. This data helps attract forest product based companies to Mississippi.

In FY13, MFC began to re-inventory the state. The re-inventory is a 5 year project, accomplishing 20% of the state per year. It is important that we continue to find ways to fund our statewide inventory so Mississippi can continue to be competitive in the growing market of bio-energy and forest products.

The forest industry in Mississippi is a \$10.38B industry and represents over 63,000 jobs. In FY13, MFC/MIFI used the information to respond to numerous requests for resource analyses for forest product, ethanol conversion and wood pellet facilities. A re-inventory is currently in progress and will continue to keep Mississippi's forest based economy competitive.

Forest Management

Forest Management - The MFC is charged in Mississippi Code Section 49-19-3 to "promote sound forest management practices which maintain the integrity of the environment and provide for our state's future natural resource needs." The MFC offers a variety of forest management services to private landowners and public forestlands of Mississippi, such as 16th Section Lands and other state agency properties

Mississippi Forest Action Plan - In response to a requirement of the Food, Conservation and Energy Act of 2008 (the Farm Bill), MFC completed a statewide forest resource assessment and a long-term statewide forest resource strategy titled "Mississippi's Assessment of For-

est Resources and Forest Resource Strategy" in FY10. This assessment and strategy will allow Mississippi to receive funds under the amended Cooperative Forestry Assistance Act. The assessment provides an analysis of forest conditions and trends in the state and delineates priority rural and urban forest landscape areas. The strategy provides general long-term plans for investing state, federal and other resources to effectively stimulate or leverage desired action and engage multiple partners. A copy of the State Assessment and Strategy can be found on our website at www.mfc.ms.gov.

In FY11, the State Assessment and Strategy was put into action and effectively became known as the State Forest Action Plan (FAP). In FY13, the FAP continues to act as a general guideline for most forest management activities conducted by MFC throughout the state. The FAP will be adjusted as needs arise or until we have reached a point where a new state forest assessment is needed.

Private Lands

Private Lands - MFC provides technical and financial assistance to private nonindustrial forest landowners (PNIFs) in Mississippi. Seventy percent of Mississippi's timberland, 13.86 million acres, belongs to an estimated 350,000 PNIFs with parcels of 10 acres or greater. MFC provides technical and financial assistance to PNIFs through programs designed to enhance and protect natural resources.

FY13 Statewide Accomplishments

Private Lands Activities

Landowners Assisted	11,428
Forest Management Plans	2,913
Acres	194,947

Public Land Activities

Timber Sale Receipts	\$19,112,612.00*
Number of Sales	215
Acres Regenerated	10,844
Boundary Line Maintenance (Miles)	476
Firebreak/Woods Road Maintenance (Miles)	784

Forest Resource Development Program

Acres Regenerated or Improved	31,315
-------------------------------	--------

Prescribed Burning

Private Lands (Acres)	12,883
Public Lands (Acres)	17,256

Total (Acres)	30,139
----------------------	---------------

*Source: MFC's Public Lands Timber Sale report and FY13 Crew Assistance report. Receipts are from sales made on School Trust Lands and other public lands. Timber sale receipts consist of lump sum sale revenue, carry-over revenue from FY12, and actual thin sale revenue; does not include remaining pay-as-cut revenue which will be reported next year as carry over from FY12. Note: 19 public land timber sales were rejected in FY13 due to low bids or no bids, which reflects poor market conditions, especially in the sawtimber market.

Forest Legacy Program

Forest Legacy Program - The Forest Legacy Program (FLP) was authorized by the 1990 Food, Agriculture, Conservation and Trade Act to identify and protect environmentally important, private forestlands threatened with conversion to non-forest uses. FLP is a USDA Forest Service program in partnership with Mississippi that will help support local efforts to protect environmentally sensitive, privately owned forestlands threatened by conversion to non-forest use through land acquisition and conservation easements. A statewide Assessment of Need (AON) was completed in 2007 as a first step to identifying the three Forest Legacy areas (North, Central and Southeast MS) where important natural forest communities exist on private lands that are potentially threatened by conversion from urban and suburban growth or other threats. The AON is posted on the MFC's Web site at www.mfc.ms.gov.

At the end of FY 2012, the MFC in cooperation with the Land Trust for the Mississippi Coastal Plain were completing the acquisition of Mississippi's first Forest Legacy conservation easement on a 518 acre tract on the Escatawpa River in Jackson County. MFC also nominated two tracts for acquisition on the Pascagoula River that were listed in the FY 2013 President's budget.

Forest Resource Development Program

Forest Resource Development - The Forest Resource Development Program (FRDP) was established in 1974 by the Mississippi Legislature for developing the state's forest economy. This program provides cost-share funding for tree planting and forest improvement practices for the purpose of long-term timber production. This program helps offset a landowner's expense by sharing the cost of implementing specific forestry practices designed to produce timber and enhance wildlife development. Cost-share payments cover 50 to 75 percent (depending on the practice) of the total cost of implementing one or more forestry practices, with a maximum limit set for each individual practice.

Eligible landowners can receive up to \$7,000 of FRDP assistance a year. In turn, a landowner agrees to protect the area receiving FRDP assistance from fire and grazing, and to properly manage the area for a minimum of ten years.

On average, more than \$2 million is distributed each year to private forest landowners in Mississippi through the Forest Resource Development Program, which provides cost sharing for tree planting and forest improvements.

Forest Stewardship Program

Forest Stewardship Program - The Forest Stewardship Program promotes natural resource planning on private, nonindustrial forestlands. Landowners not currently under forest management are encouraged to utilize stewardship management through the development and implementation of a Forest Stewardship Management Plan. These plans are based on sound management principles designed to restore and protect forest resources and water quality and to improve fish and wildlife habitats



The Forest Stewardship Program is funded by the USDA Forest Service. The program is carried out by MFC through its Forest Stewardship Committee. Technical assistance is provided by local, federal, state and private natural resource agencies and organizations. The State Plan for the Mississippi Forest Stewardship Program provides the framework for conducting the program. The plan also contains stewardship background, guidelines and forms for landowners and resource professionals.



Public Lands

Public Lands - The MFC provides management assistance to boards, agencies and other entities having jurisdiction over approximately 480,000 acres of non-federal public forestlands in Mississippi. MFC is responsible for managing three state forests (Kurtz, Camden and Jamie L. Whitten), managing School Trust Lands and rendering assistance to the various agencies, boards, departments and other entities having jurisdiction over state and other public lands in Mississippi.

The Mississippi Forestry Commission is a nationally recognized leader in forest management technology. Several unique software products have been created specifically for forestry management through hurricane recovery federal funding and at no cost to the state:

- A Geographical Information System (GIS) application called Spatial Information Management System (SIMSMap);
- A computer-driven forest management plan developer called PlanWriter
- A new Plot Allocator to more efficiently collect data and meet statistical objectives faster
- Use of handheld computers that allows for monitoring the sampling error during the inventory
- Use of trail/game cameras to monitor the number of loads leaving logging site for accountability
- A harvest scheduler called Woodstock, which takes data from SIMSMap and creates a statewide harvest plan to carry out management activities from one year to the next.

In FY13, the revenue from timber sales on non-federal public lands, including School Trust Lands, totaled \$19.1 million.



“Our goal is to sustainably maximize School Trust Land timber sale revenue by applying a more intensive timber management process. These funds directly benefit the local school districts and the children attending those schools.”

Charlie Morgan, State Forester

Sixteenth Section Lands

The Forestry Commission is charged by state law to manage forested School Trust Lands, commonly referred to as Sixteenth Section Lands located in 67 counties. In addition to timber production, management considerations also include wildlife, soil and water quality, aesthetics and other appropriate benefits of forestlands. The revenue from timber sales on School Trust Lands and other public lands in FY13 totaled \$19.1 million.

The MFC has converted all its management data into a GIS system to prepare the first comprehensive Sixteenth Section Land Assessment. This assessment, together with more intensive forest management practices, has allowed us to meet our mark of timber-generated revenues on school trust lands. The assessment is what also gave us the opportunity to have these school trust lands certified by the American Tree Farm System, the first ever large scale certification of public lands in the nation. This certification ensures that these lands will remain sustainable and marketable into the future.

Anticipating future needs, the MFC ensures necessary steps are taken so that all School Trust Lands are managed sustainably, and best management practices are used on all lands.



Forest Health

MFC provides forest pest detection, evaluation and control recommendations for all private and state-owned timberlands as well as urban areas. The agency conducts at least one statewide aerial survey each year and additional surveys when needed. Insect and disease spots are ground checked to determine the exact cause and extent of damage.

The southern pine beetle kills more pine timber in the South than any other forest insect. As a result, the MFC has partnered with the MSU Extension Service to carry out a Southern Pine Beetle Landowner Incentive Program designed to provide a financial incentive to landowners who apply management practices to their pine stands to reduce the risk for southern pine beetle attacks.

The second leading insect to kill pine timber in the South is the Ips engraver beetle. Drought conditions and stress from severe winds can cause the Ips engraver beetle populations to increase dramatically.



Bark Beetle

In FY08, the MFC launched a plan to mitigate the damage caused by invasive non-native plant species to the state's forestland. The Exotic Invasive Species Plan addresses the detection, identification, information, control and abatement of six species of concern that are either impacting or have the greatest potential to impact the forest resource of Mississippi. These species are cogongrass (*Imperata cylindrica*); kudzu (*Pueraria montana*); Chinese tallowtree (*Sapium sebifera*); Chinese/European privet (*Ligustrum sinense*); Japanese/glossy privet (*Ligustrum japonicum*); and Japanese climbing fern (*Lygodium japonicum*). The plan also addresses the need to develop partnerships with other agencies and organizations to achieve common goals in regard to invasive species.

In FY09 the MFC applied to the USDA Forest Service, and was awarded, funding under the American Recovery and Reinvestment Act (ARRA) to fight native and non-native forest pest. Under ARRA the MFC established the Mississippi Invasive Plant Control Program for Cogongrass Control and the Southern Pine Beetle

Suppression Program. The MFC directly implemented the Cogongrass Program, and contracted Mississippi State University to implement the Southern Pine Beetle Program. ARRA funding expired in December of 2011. The Cogongrass Program continued operations in FY13 with USDA Forest Service Redesign Competitive State and Private Grant funding, while the Southern Pine Beetle Program continued under a separate USDA Forest Service grant for Forest Health.

Cogongrass

Applications from Landowners	301
Applications/Landowners Inspected	301
Total Infested Spots Treated	3,068
Total Infested Acres Treated	575

Native to Southeast Asia, cogongrass is believed to have entered the US in the early 1900s as packing material. Cogongrass is an aggressive invasive species that chokes out native vegetation, burns at extremely hot temperatures and is devastating to the native ecosystem. Today, infested areas of cogongrass are found on more than one million acres throughout the southeastern US. In Mississippi, cogongrass has been identified in 63 counties, with significant infestations in 28 counties.

Forest Health Posters

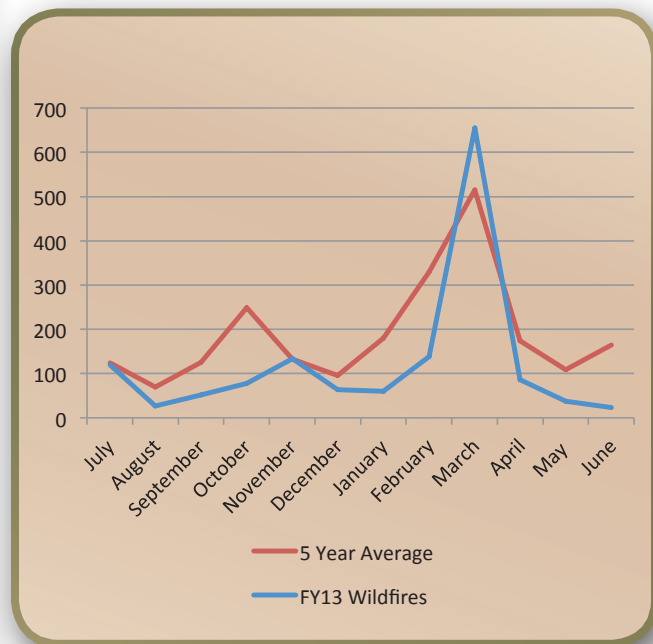
Fire Services

Fire Services - The Fire Services Division includes four departments: Aviation, Communications, Rural Fire Assistance and Fire Law Enforcement.

In 1926, the Mississippi Legislature mandated that the MFC protect the state's forestland from wildfire. At that time, wildfires were consuming more than five million acres of timberland each year.

MFC provides assistance to Mississippi and other states with all weather-related events such as hurricanes, ice storms and large scale wildfires, and also coordinates the management of MFC's firefighting resources within the state.

MFC collects all data needed to make sound decisions and long-range plans to ensure the adequate allocation of resources needed for pre-suppression and suppression of wildfires. MFC manages 12 remote area weather stations (RAWS) strategically located across the state as part of a national grid. These weather stations provide localized forestry and fire-related weather forecasts.



The MFC provides the following weather and fire information on the Web site:

- Fire Danger Rating (USDA Forest Service Wildland Fire Assessment System)
- Current Weather
- Forecast
- Fire Danger Rating and Color Code
- Keach Bryam Drought Index
- MFC Daily Fire Situation Report
- Southern Area Coordination Center (SACC)
- National Weather Service Enhanced Radar Image Loop for the United States
- NWS Enhanced Radar Image Loop for Lower Mississippi Valley Sector
- NWS Fire Weather Report

Cause	# Wildfires	# Acres
Lightning	25	478
Campfire	7	16
Smoking	7	39
Debris burning	584	5,678
Incendiary	680	9,125
Equipment Use	27	222
Railroad	4	102
Children	7	79
Miscellaneous	133	1,828
Re-ignition	0	0
Total	1,474	17,567

While great strides in wildfire prevention, detection and suppression have been made, wildfires still continue to plague the state. There are approximately 2,825 wildfires each year in Mississippi burning more than 43,000 acres. Due to adequate rainfall during the wildfire seasons this year, occurrences and acres burned were below normal for FY13.

In an effort to reduce the number of carelessness-caused wildfires, burn bans are authorized by County Boards of Supervisors and approved by the MFC. Burn ban notifications are listed on the MFC's Web site at www.mfc.ms.gov.

Communications

An essential element of the agency's ability to deploy firefighting resources and maintain situational awareness of wildfire activity is dependable radio communications. The Communications Department is responsible for the maintenance and upgrades to the MFC's communication network which spans across the state. Components of the network include mobile radios in the agency's fleet of vehicles, lightweight hand-held radios for field personnel, and the communication network of radio repeater sites, which provide statewide communication from dispatch centers to field personnel.

In FY11, MFC made our first purchase of radios for Mississippi Wireless Integrated Network (MSWIN) system as required by the Mississippi Wireless Communications Committee (WCC). During FY13, the MFC continued to implement and use these new radios. The MSWIN system will provide interoperable emergency radio communication across the state with all levels of government, agencies and organizations. This system is a result of Hurricane Katrina, where the need for a more coordinated response during times of crisis was identified.

Volunteer Fire Assistance Program

Formerly known as the Rural Community Fire Protection Program, the Volunteer Fire Assistance Program (VFA) provides grants to eligible rural volunteer fire departments (VFDs) for the purchase of wildland firefighting and personal protection equipment. The Mississippi Forestry Commission administers this program through an agreement with the USDA Forest Service. In FY13, the Mississippi Forestry Commission awarded 57 grants totaling \$201,957 to volunteer fire departments. These grants were used to purchase the wildland firefighting ready-kits containing protective clothing and gear for 570 volunteer firefighters.

Firewise

In FY13, 20 homes were destroyed, 4 homes were damaged and 1,384 homes were threatened by wildfire. Is your home Firewise?

Firewise is an educational program for homeowners and community leaders. This program is for anyone living in, or connected to, the wildland/urban interface. Information is available on how to design, construct, landscape and maintain a home or community to withstand a wildfire without the aid of firefighting resources on scene. Firewise literature can be found on our website at www.mfc.ms.gov.

Firewise Workshops are also conducted throughout the state. These one day workshops are free of charge and bring together citizens, business, and community leaders, getting them involved in planning, financing, building, sustaining, and protecting communities in the wildland/urban interface. Participants learn about why homes burn, various wildland fuel reduction techniques, and how to assess the fire danger of their own home. The dates for Firewise Workshops can be found on our website as well.

There are five communities in Mississippi that have been officially designated as Firewise Communities/USA Communities. They are:

- Snow Lake Shores, MS in Benton County
- Lake Hillsdale Property Owner's Association in Pearl River County
- Gloster, MS in Amite County
- Noxapater, MS in Winston County
- Ethel, MS in Attala County

In FY13, MFC suppressed 1,474 wildfires, which burned 17,567 acres. The average wildfire size for FY13 was 11.9 acres

Aviation

Wildfire detection is provided by airplane surveillance together with the public's reporting of wildfires using toll-free numbers provided by the MFC. Fire suppression crews are dispatched from a central dispatching center located at a district office. On large fires, the airplanes stay above providing ground attack personnel real-time information of the fires behavior. MFC's Aviation Department also provides service and support to Forest Health and other forest management programs.

Rural Fire Assistance

Providing assistance to the state's volunteer fire departments has had a significant impact on reducing the number of wildfires in Mississippi. This assistance is available through the Federal Excess Personal Property (FEPP) Program and the Fire Fighter Program (FFP), administered by the MFC through an agreement with the USDA Forest Service.

Since 1956, FEPP has allowed the Forest Service to loan property to state forestry agencies for the purpose of wildland and rural firefighting. The Forest Service is authorized and encouraged by the Secretary of Agriculture to loan FEPP to states, and through the states, to local fire forces.

MFC delivered the first FFP equipment in FY10. The use of the equipment is for wildland/rural firefighting and emergency response. Unlike FEPP, FFP equipment ownership is transferred to the receiving organization.

Approximately 70 percent of the property involved in the FEPP program in Mississippi is sub-loaned to local fire departments. Approximately 90% of all equipment acquired through FFP is transferred to local fire departments. In FY13, MFC's FEPP/FFP issued 99 vehicles and 147 pieces of other equipment with an estimated value or acquisition cost of \$9.15 million.

In FY13, the Mississippi Forestry Commission awarded 57 grants totaling \$201,957 to volunteer fire departments.

Fire Law Enforcement

The MFC and the Mississippi judicial system have the responsibility to pursue the arrest and conviction of woods arsonists, individuals who show little or no concern for Mississippi's citizens and forest resource. The MFC is also charged with pursuing retribution in instances where negligence has caused wildfires that result in the expenditure of state and/or federal funds.

Woods arson has historically been the leading cause of wildfires in Mississippi. In 1993, in an attempt to abate the problem, the Mississippi Legislature established fire law enforcement positions within MFC. The duties and authority of these officers are limited to woods arson. These officers may "... issue citations for any violation of those laws designed for the protection from fire recklessly or with gross negligence being communicated on the lands of another." (Section 49-19-3)

During FY13, MFC investigators dealt with four felony woods arson cases. These cases included the arrest of four different individuals in Hancock, Lamar and Pearl River Counties. One of these cases also resulted in recovery of controlled substance and charging of criminal drug charges by the MS Bureau of Narcotics and the local Sheriff's Office. The other three felony cases are awaiting a Grand Jury Indictment Hearing.

In our misdemeanor cases, MFC investigators have dealt with total of eight cases. We have issued a total of eight citations under the woods arson statute. Most of these cases have rendered a favorable decision and ordered the defendant to pay the restitution amount. In both felony and misdemeanor cases the total of pending restitution stands at approx. \$24,200.00.

In suppression cases, the MFC investigators directly handled 17 cases, in which the responsible parties were issued an invoice for the incurred costs totaling approximately \$13,600.00. The total amount involved in all pending civil and criminal cases is \$37,912.23. This includes suppressions, misdemeanor and felony restitutions. There are some of the cases that money totals are not yet available and will have to be added



to next fiscal year. The total number of all investigated cases criminal or civil is approximately 115 cases.

The law enforcement division also initiated and assisted on a timber theft case that is still ongoing and is being lead by the Mississippi Department of Agriculture and Commerce. This case has now produced three different criminal/felony indictments (Timber Theft) on the responsible individual on three different timber sales within school lands where timber theft was occurring. There was in excess of \$375,000.00 worth of timber stolen from these tracts. This case is now set for trial awaiting the hearing date set in Pearl River Co.

ARSON


REWARD

Up To \$2,500

Please Call the Arson
Tip Line 1-800-240-5161

For Information Leading to the Conviction
of Anyone setting Arson Forest Fires

The next FOREST FIRE may
be on YOUR PROPERTY



Accidental fires, such as escaped control burns and debris burns, are as costly as those set on purpose. Accidental fires, the second most common cause of wildfires in Mississippi, require the same types of actions and resources as arson fires.



Forest Information and Public Outreach

The Forest Information and Public Outreach Division supports all MFC program areas by providing information, promotional activities and publicity. The division utilizes mass media outlets (e.g., radio, television and print) and social media outlets (e.g., Facebook and YouTube) to release forestry and agency information to the public at large. Multiple delivery methods are used in order to reach the public in the most effective manner.

Forest Information

The Forest Information Department provides support to all MFC programs through the development of displays, exhibits, brochures and other informational material. The department is the point of contact for media relations and is responsible for maintaining the MFC Web site, www.mfc.ms.gov, maintaining our presence on social media, and producing the agency's newsletter, annual report and MFC News.

Public Outreach

MFC Outreach Program	
Adult and Youth Programs	730
Participants	61,585*

* Numbers do not include participants from MS State Fair, MS Wildlife Extravaganza or MS Garden and Patio Show

The Public Outreach/Conservation Education Department maintains an active outreach program designed to educate youths and adults about forestry and related issues, in addition to the agency's mission and services. Local outreach activities such as civic club presentations, forestry field days and visits to school groups are carried out across the state to reach individuals at the community level. In FY13, outreach activities reached more than 27,000 youths and 47,000 adults. These numbers do not include the people we interacted with at the Mississippi State Fair, Mississippi Wildlife Extravaganza, or Mississippi Garden and Patio Show. Two topic specific outreach programs are housed within the Public Outreach Department: the Firewise Program and the Underserved Landowner Outreach Program..



Smokey Bear

Underserved Landowner Outreach Program

The Underserved Landowner Outreach Program is a joint project between the MFC, Alcorn State University and the USDA Forest Service. The program offers assistance to underserved landowners in Mississippi. This program has three primary goals:

- To provide outreach support and technical assistance to underserved landowners;
- To encourage young people to seek careers in forestry; and
- To work with Alcorn State University to develop and/or enhance projects of mutual forestry interest.



Urban/Community Forestry

The MFC provides assistance and training to urban areas in developing community forestry programs. This includes support to counties and municipalities on developing tree ordinances, inventorying street trees and writing urban forest management plans. The MFC also provides technical advice to builders on tree preservation during construction and helps homeowners with advice on insects, diseases and other tree care problems.

In FY13, the MFC's Urban/Community Forestry Program provided 6 financial assistance grants totaling \$95,043.00 to state and local governments, non-profit groups and educational institutions..

The Urban and Community Forestry Challenge Grant Program, funded through the USDA Forest Service, provides funding for administration, demonstration projects and educational programs.

One of the major functions of the Urban Forestry Division is providing leadership, financial aid and technical support to the Mississippi Urban Forest Council (MUFC). The MFC worked jointly with this volunteer organization to provide a series of regional workshops focused on the Community Revitalization with Trees program. This program provides training, educational material, technical tools and other resources to assist rural communities in revitalizing or enhancing local areas with community forestry. Six regional communities were selected as model projects to demonstrate implementation of long term locally sustainable community forestry programs.

The Urban Forestry Division and MUFC also promote and provide assistance for The Arbor Day Foundation's Tree City USA, Tree Campus USA and Tree Line USA programs.

Tree Line USA

The Arbor Day Foundation recognizes public and private utilities that demonstrate practices that protect and enhance America's urban forests. The Tree Line USA program promotes the dual goals of safe, reliable electric service and abundant, healthy trees across utility service areas. Mississippi's only local Tree Line USA Utility is 4-County Electric Power Association.

Tree Campus USA

Tree Campus USA program recognizes college and university campuses that: Effectively manage their campus trees, develop connectivity with the community beyond campus borders to foster healthy, urban forests and strive to engage their student population utilizing service learning opportunities centered on campus, and community, forestry efforts. Mississippi's Tree Campus USA is Delta State University.

Tree City USA

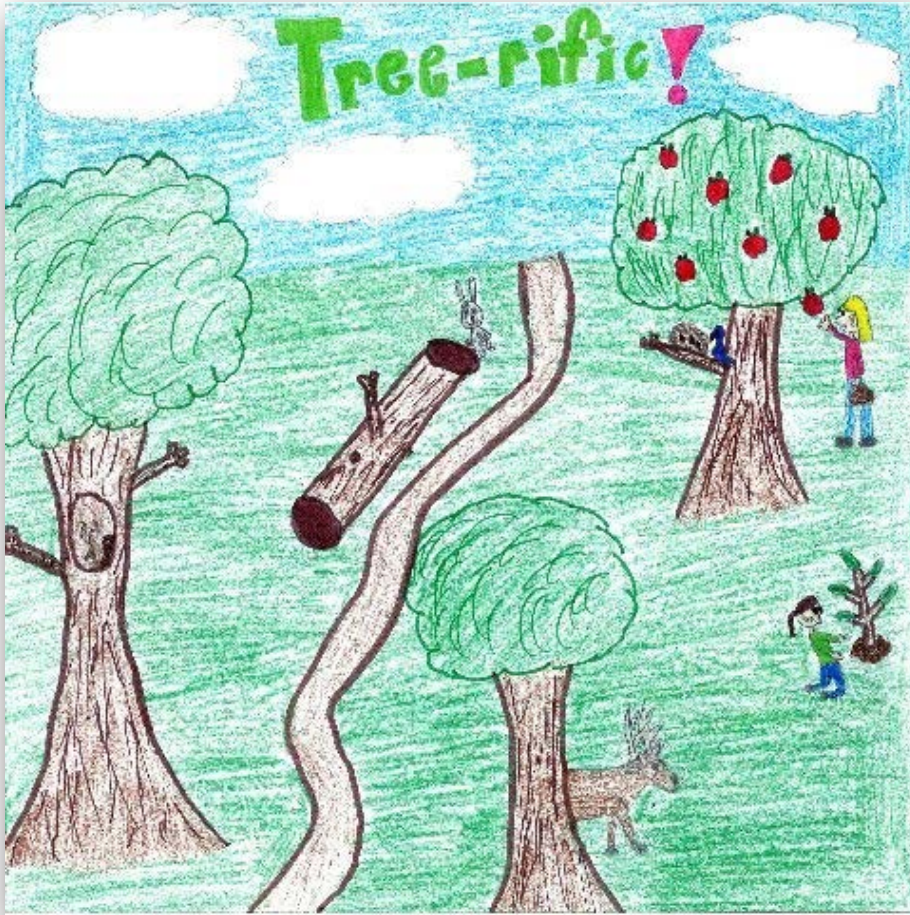
Tree City USA is a national recognition program that provides a basis for model community forestry practices. The program is administered by MFC in Mississippi. There are currently 41 Mississippi cities and towns certified as Tree City USA.

- | | |
|---------------------|-----------------------|
| Laurel | Pascagoula |
| Tupelo | Biloxi |
| Winona | Long Beach |
| Meridian | Lucedale |
| Hattiesburg | Greenville |
| Keesler AFB | Columbus AFB |
| Cleveland | Ocean Springs |
| Grenada | Columbus |
| Greenwood | Oxford |
| Horn Lake | Leakesville |
| Olive Branch | Pearl |
| Ellisville | Sandersville |
| Tunica | Senatobia |
| Ridgeland | Pass Christian |
| Gulfport | Starkville |
| Southaven | Bay St. Louis |
| New Albany | Mound Bayou |
| Terry | Hernando |
| Okolona | Brandon |
| Diamondhead | Brookhaven |
| | NAS Meridian |

The Arbor Day Poster Contest is no longer sponsored nationally by the Arbor Day Foundation, but is being continued statewide by MFC with assistance from MUFC.

2013 Arbor Day Poster Winners

Student	School
1st: Kyndal Key	Magnolia Heights School
2nd: Hai Hai Fisher	Lafayette Upper Elementary
3rd: Marilee Hensley	Magnolia Heights School
Honorable Mention: Abigail Garmendia	H.W. Byers School



First Place poster

Champion Tree Program

Champion Trees of Mississippi, the official publication of the Mississippi Champion Tree Program, records the largest trees of various species growing in the state. Of the 175 trees registered as Mississippi Champions, nine are also national champions and five are national co-champions. You can find a list of these trees on our website at www.mfc.ms.gov.

Business Support

Business Support consists of four service-oriented departments: Financial Services, Information Systems, Human Resources and Safety/Training.

Financial Services

Financial records of the MFC are maintained in accordance with accepted accounting procedures and conform to state and federal law as defined by the Comptroller, Examiners of Public Accounts and the USDA Forest Service. The MFC FY13 Income and Expense Statement and financial highlights can be found on page 15.

A component of Financial Services, the Purchasing Department is responsible for ensuring that the MFC follows all state purchasing laws and requirements. Providing purchasing-related assistance to the agency's administrative districts and program areas is an essential function of the department.

Information Systems

During FY13, Information Systems provided maintenance and technical support to the MFC's network of computers. Improvements and updates to the MFC's Web site were made throughout the year. The Web site is accessible for the public and employees at www.mfc.ms.gov. During periods of high fire danger, the Web site is used to provide public service information, including daily fire reports and news releases. The "Employee Section" of the Web site has become very useful in providing updated forms and documents to employees. The Web site is managed as a joint project between Information Systems and Information/Outreach.



Human Resources

The MFC's Human Resources Department strives to maintain a total personnel administration program for the entire agency. In FY13, the MFC had 457 full-time and two part-time authorized employee positions. Authorized positions for FY12 include 460 full-time and two (2) part-time.

MFC Employees*

Position	FY12	FY13
Full Time	460	457
Part-Time	2	2

* Does not include federally-funded, time limited positions

Safety & Training

The Safety and Training Program stresses the importance of safety in all programs of the MFC. Providing tools, techniques and training necessary for employees to work safely and effectively is essential to enhancing job skills and fostering personal development and growth. Continuing education and training opportunities were available for each employee in FY13. Some of the training includes forest management training, pipeline safety training, prescribe burn short course, fire safety training and the Changing Roles Workshop.



MISSISSIPPI FORESTRY COMMISSION
Fiscal Year 2013 Income and Expense Statement thru June 30, 2013
Comparative to June 30, 2012

	6/30/13	6/30/12	Increase/ (Decrease)	
Income:				
48000	General Funds	\$16,225,829	\$16,825,831	\$(600,002)
40260	Severance Tax	2,794,085	2,702,924	91,161
40440	Acreage Tax	1,371,045	1,368,207	2,838
41460	Miscellaneous Income	22,393	540,084	(517,691)
42310	Criminal Law Assessment Fines	8,717	4,664	4,053
43100	Rent of State Property	34,451	32,472	1,979
43170	Rent of Office Space	40,000	-	40,000
44080	Forestry Programs	3,728,024	5,746,327	(2,018,303)
45010	Crew Assistance - Private Lands	390,650	350,058	40,592
45020	Crew Assistance - Public Lands	1,380,196	1,318,477	61,719
46000	Sale of Real Estate	3,000	-	3,000
46010	Sale of Property	87,292	15,415	71,877
46020	Sale of Scrap	1,714	1,233	481
46030	Other Sales	(63,328)	-	(63,328)
49150	Transfer from other funds	500,000	500,000	-
	Net Revenue	\$26,524,068	\$29,405,691	\$(2,881,623)
Accounts Receivable:				
	Billable Services	5,521	168,822	(163,301)
	Federal Reimbursements	189,531	-	189,531
	Net A/R	\$195,052	\$168,822	\$26,230
	TOTAL REVENUE	\$26,719,120	\$29,574,513	
Expense:				
	Salaries	17,754,791	18,403,285	\$(648,494)
	Travel	101,832	88,208	13,624
	Contractual	2,470,080	2,954,212	(484,132)
	Encumbrances	401,038	349,443	51,595
	Commodities	2,180,343	2,618,147	(437,804)
	Encumbrances	139,184	55,095	84,089
	Capital Outlay other than equipment	314,375	-	314,375
	Encumbrances	-	-	-
	Equipment	270,501	853,588	(583,087)
	Encumbrances	3,821	5,664	(1,843)
	Vehicles	2,445	62,736	(60,291)
	Encumbrances	-	427,700	(427,700)
	Wireless Communication Devices	1,978	6,784	(4,806)
	Encumbrances	-	400	(400)
	Subsidies, Loans, and Grants	2,340,768	2,971,706	(630,938)
	Encumbrances	-	-	-
	TOTAL EXPENSE	\$25,981,156	\$28,796,968	(2,815,812)
	NET	737,964	777,545	

Total Encumbrances thru June 2013: \$544,043
(cash not expended, only authority reserved)

FY13 Board of Commissioners

Buck Hobbs, Chairman

2479 Hwy 309 South
 Byhalia, MS 38611
 Home Phone: (662) 838-2056
 Cell Phone: (901) 490-1541
 Email: hobbs5h@aol.com
Term expires: January 19, 2017

Robert E "Bob" Cox

1732 Douglastown Road
 Maben, MS 39750
 Home Phone: (601) 324-0194
 Cell Phone: (901) 488-3795
 Fax Number: (662) 324-3183
 Email: bob.cox@tembec.com
Term expires: June 30, 2012

Larry Homan

PO Box 39
 Fulton, MS 38843
 Home Phone: (662) 862-2208
 Cell Phone: (662) 891-2208
 Fax Number: (662) 862-4900
 Phone: (662) 862-2125
 Email: tristate@intop.net
Term expires: June 30, 2013

Neil Black

187 Biglane Road
 Ellisville, MS 39437
 Phone: (601) 498-3038
 Alt Phone: (601) 752-2696
 Email: neilblack60@yahoo.com
Term expires: March 19, 2017

Dr. George Hopper

MSU, Box 9680
 Mississippi State MS 39762-9680
 Office Phone: (662) 325-2953
 Fax Number: (662) 325-0015
 Email: ghopper@cfr.msstate.edu
Non-expiring

Jim Lockett

5187 Dogwalk Road
 Tutwiler, MS 38963
 Home Phone: (662) 627-3882
 Cell Phone: (662) 902-7348
 Email: jlockett@nwsolutions.us
Term Expires: June 30, 2018

Lloyd Young

355 East Shore Dr.
 Eupora, MS 39744
 Home Phone: (662) 617-5925
 No email at this time
Term Expires: June 30, 2013

Eddie Howze

530 Meadowbrook Rd
 Greenwood, MS 38930
 Home Phone: (662) 455-9709
 Fax Number: Same
 No email at this time
Term expires: June 30, 2013

Joe Pettigrew

PO Box 592
 Kiln, MS 39556
 Cell Phone: (228) 493-8733
 Email: petigru@aol.com
Term expires: June 30, 2017

James Cummins, MIFI Board Member

PO Box 10
 Stoneville, MS 38776
 Home Phone: (662) 686-4592
 Office Phone: (662) 686-3375
 Fax: (662) 686-4780
 Cell Phone: (662) 820-5703
 Email: jcummins@wildlifemiss.org
Non-expiring

MFC Administrative District Offices

Mississippi Forestry Commission

Charlie Morgan, State Forester
660 North St., Suite 300
Jackson, Mississippi 39202
Phone: (601) 359-1386 • Fax: (601) 359-1349

Northeast District

Stacy Lewis, District Forester
1711 McCullough Boulevard
P.O. Box 703 • Tupelo, MS 38802
Phone: (662) 842-5312 • Fax: (662) 680-9999

South Central District

Jack White, District Forester
2705 Highway 15 South
P.O. Box 348 • Bay Springs, MS 39422
Phone: (601) 764-2711 • Alt. Phone: (601) 764-3061
Fax: (601) 764-3037

Northwest District

Mark Williams, District Forester
1801 Highway 51 South • Grenada, MS 38901
Phone: (662) 226-3321 • Fax: (662) 226-0170

Southeast District

Mike Lee, District Forester
1528 Azalea Drive
P.O. Box 430 • Wiggins, MS 39577
Phone: (601) 928-5261 • Fax: (601) 928-3174

Capital District

Dale Oliver, District Forester
3139 Highway 468 • Pearl, MS 39208
Phone: (601) 420-6024 • Fax: (601) 420-6027

Southwest District

Randy Chapin, District Forester
515 County Farm Lane Northeast
P.O. Box 749 • Brookhaven, MS 39602-0749
Phone: (601) 833-6621 • Alt. Phone: (601) 833-2598
Fax: (601) 835-0188

East Central District

Ted Ratcliff, District Forester
14941 Highway 16 West
P.O. Box 429 • Philadelphia, MS 39350
Phone: (601) 656-1381 • Fax: (601) 656-9247

For a complete list of all offices & employees,
please visit our website www.mfc.ms.gov.



Follow us on Facebook, Twitter and Youtube.



www.facebook.com/MSForestryCommission



www.twitter.com/msforestrycomm



www.youtube.com/user/msforestrycommission

660 North Street, Suite 300
Jackson, Mississippi 39202
www.mfc.ms.gov